



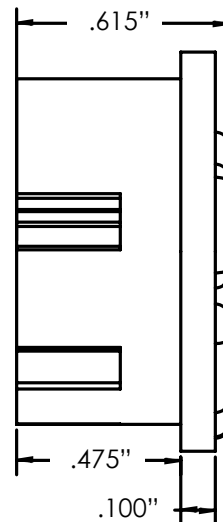
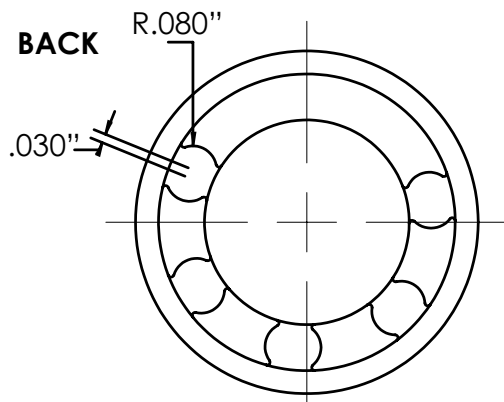
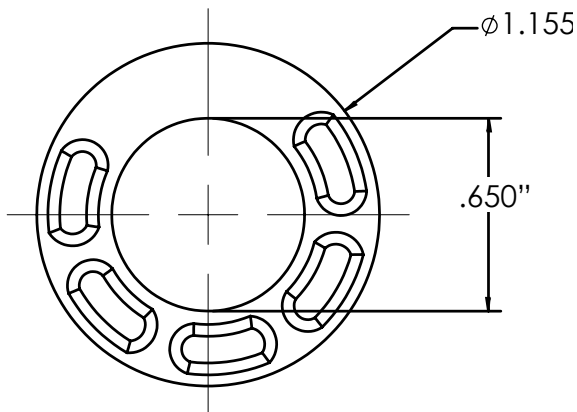
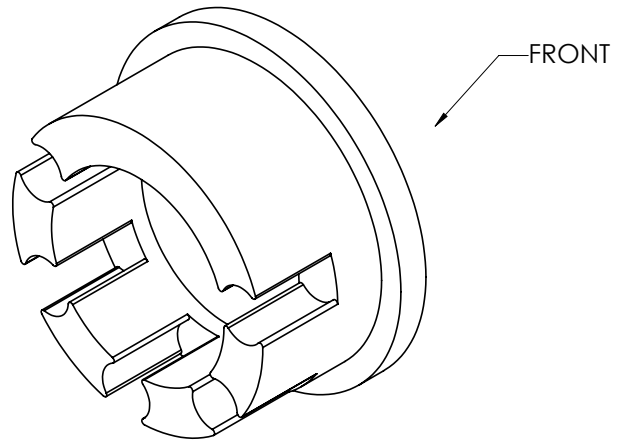
Multiple LED Holder (1" hole)

Multiple LED Holder Can Hold Up to 5 T-1 3/4 LEDs

Multiple LED Holder Can Be Used on Standard Profile or Larger Meter Base Housing

Multiple LED Holder Can Be Clipped Onto Panel/Enclosure Doors

UV stabilized polycarbonate



(Diagrams are not to scale)